


**FIGURE 3.1-6
MINERAL RESOURCES
EAST SECTION
2 OF 2**


Santa Clarita Valleywide General Plan
One Valley, One Vision
Santa Clarita/Los Angeles County, California

-  OVOV Planning Area
-  City of Santa Clarita Boundary
-  Angeles National Forest
-  County Boundary



Existing Mineral Extraction Areas

-  Sand, Gravel, and Rock

Mineral Resource Zones

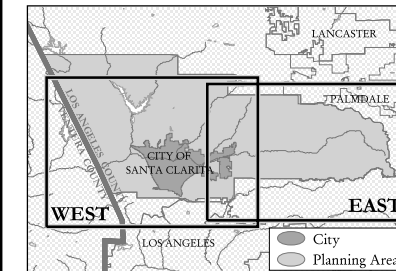
-  Zone 2 (Aggregate)

Mines (Available data shows no mines in the eastern portion of the Planning Area)

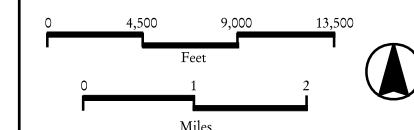
-  Placer Gold Gulch
-  Lode Mine

NOTE: Northern portion of Planning Area, which is primarily Angeles National Forest, is not shown.

MAP INDEX



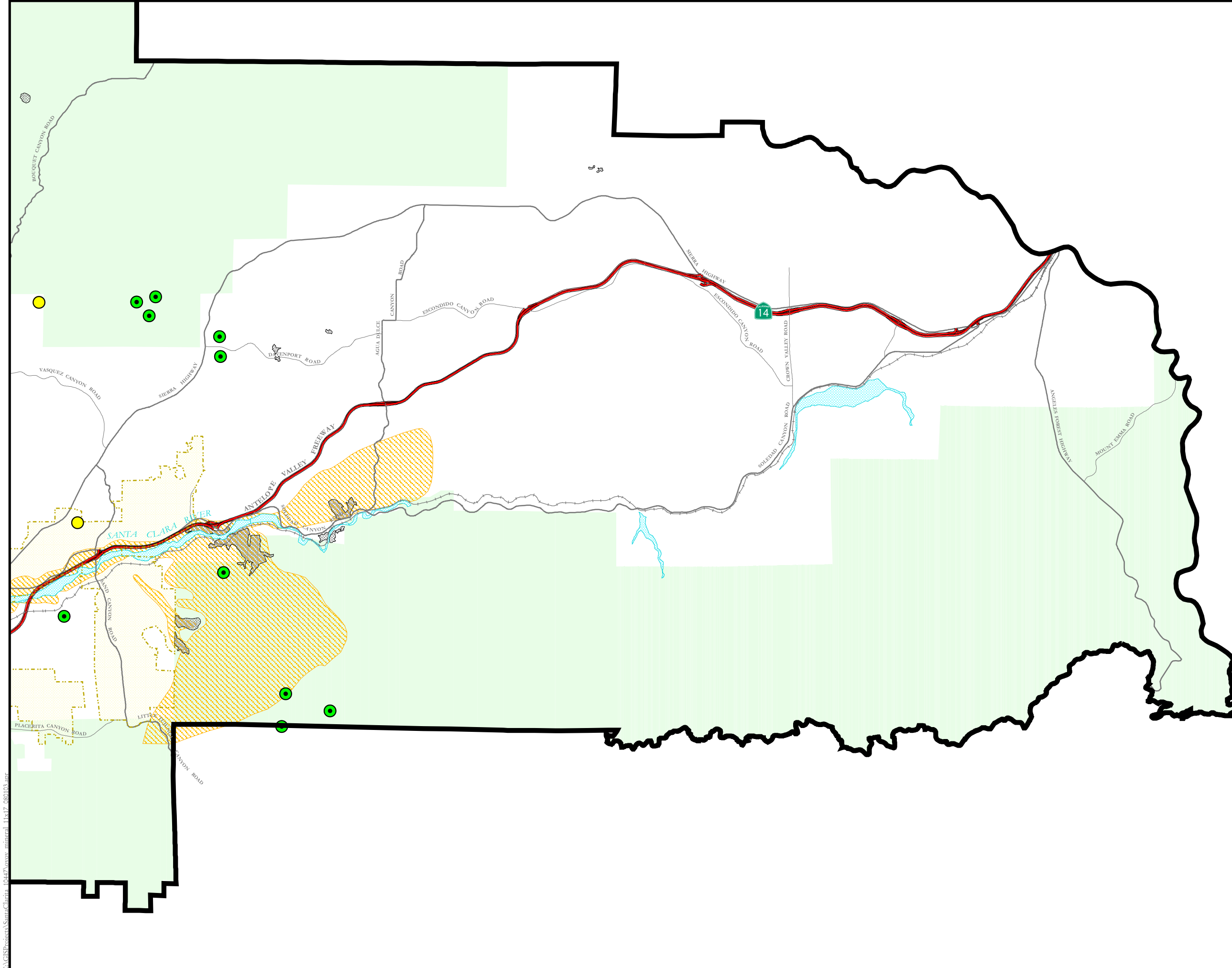
Note: GIS Projection - CA State Plane, Zone 5, NAD83, Feet.



Source: City of Santa Clarita - Planning, City Boundary, July, 2003; Thomas Bros., Waterbodies, National Forests, and Streets, August 2001; LA County - Planning, OVOV Boundary, May 13, 2002, Extraction Areas, December 2001; California Department of Mines and Geology, Mineral Resource Zones, 1994; California Department of Oil, Gas, and Geothermal Resources, Well Locations and Oil/Gas Fields, June 20, 2000; State Mining and Geology Board, Mines, August 2001; and EIP Associates, GIS Program, September 30, 2002.



PROJECT NUMBER: 10447-03
Requested by: CP
Created by: NAJ
Date: 08/12/03



C:\GIS\Projects\SantaClarita_10447\ovov_mineral_11x17_080103.apr