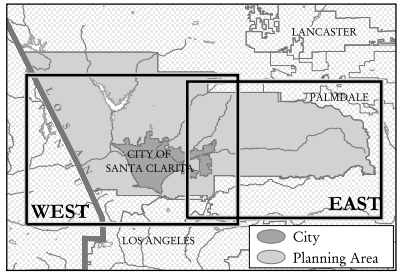


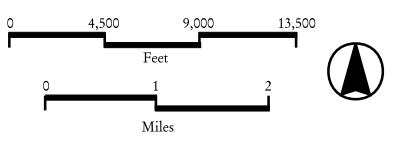
- OVOV Planning Area
- City of Santa Clarita Boundary
- Angeles National Forest
- County Boundary
- Hydrography**
 - Waterbody and Perennial Stream
- Fire**
 - Engine Jurisdiction Boundary
 - Natural Fire Zone
 - Within 1,000 Feet of a Natural Fire Zone
 - Not Within a Natural Fire Zone

Note: Fire zone data is mapped only for the City of Santa Clarita.

MAP INDEX



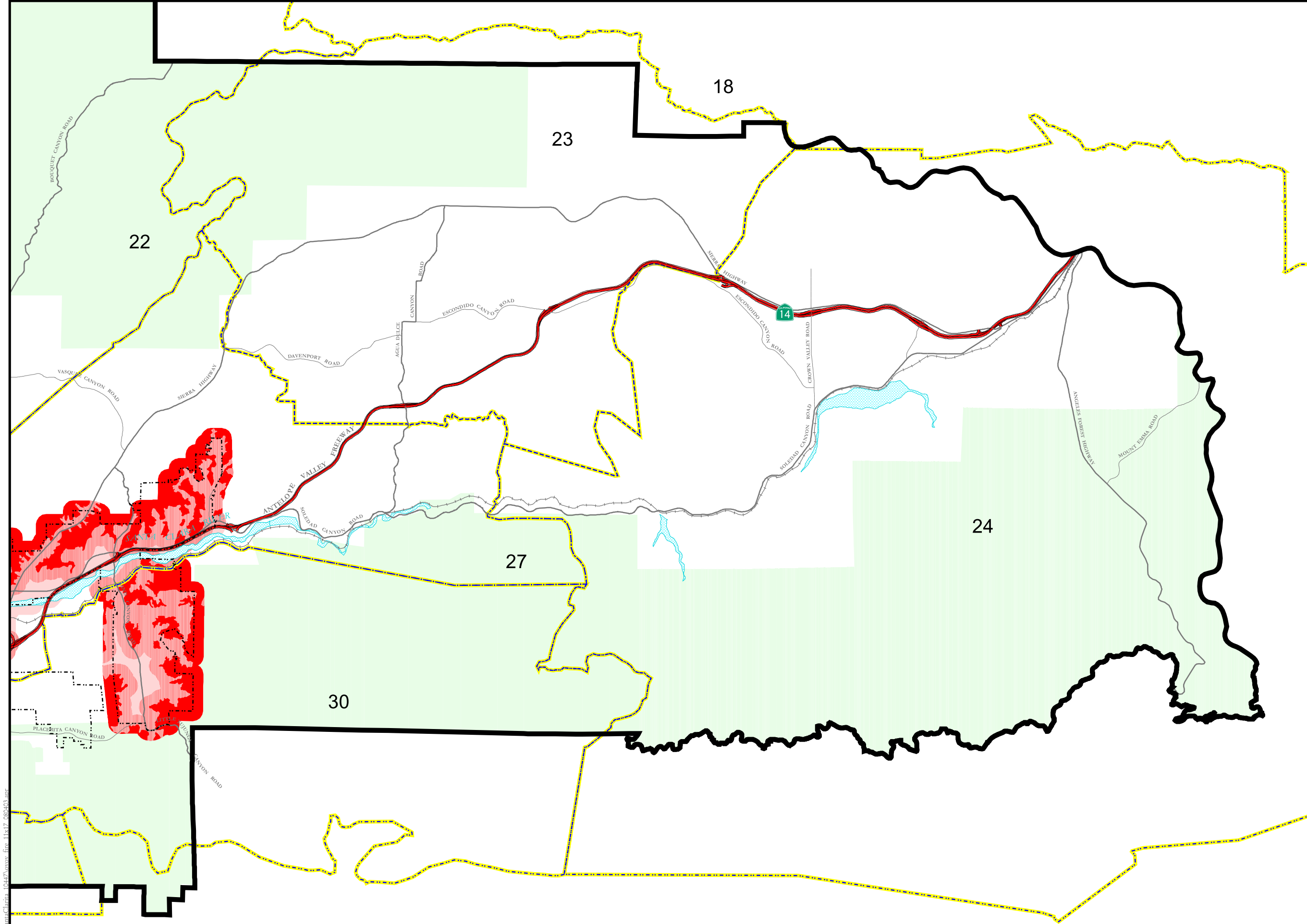
Note: GIS Projection - CA State Plane, Zone 5, NAD83, Feet.



Source: City of Santa Clarita - Planning, City Boundary, June 11, 2002; Subdivision Activity, April 2001; Thomas Bros., Hydrology, Waterbodies, National Forests, Ranger Stations and Streets, August 1, 2001; LA County - Planning, OVOV Boundary, May 13, 2002; Parcels, September 9, 2002; USGS, 1:24K Hydro DLG, June 1998; Tiger, Other City Boundaries, May 8, 2001; ESRI, County Boundaries and Roads, June 1999; LA County Fire Department, Fire stations, Fire Zones, Engine Jurisdiction Boundaries, August 22, 2002; and EIP Associates, GIS Program, October 16, 2003.



PROJECT NUMBER: 10447-03
Requested by: CP
Created by: NAJ
Date: 10/16/03



Northern portion of Planning Area, which is primarily Angeles National Forest, is not shown.

C:\GIS\Projects\SantaClarita_10447\ovov_fire_11x17_080403.apr